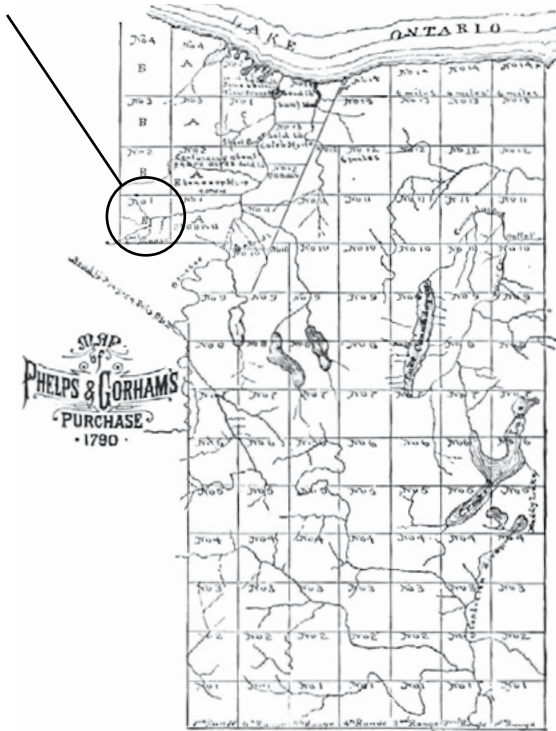


The History of Mill Seat

Opened in 1993, the Mill Seat Landfill derives its name from local history. Situated in the southwest corner of Monroe County, it was originally a part of the Phelps and Gorham Purchase known as the Mill Seat Tract.



Mill Seat Landfill

303 Brew Road
Bergen, NY 14416
(585) 494-3000 phone
(585) 494-3003 fax
millseatlandfill.wm.com
WM.com



Mill Seat Landfill

Site Information

History:

During the 1980's the leadership of Monroe County recognized the need to provide long term, environmentally sound and reliable solid waste management to the businesses and citizens of the region. The result was the development of the Mill Seat Landfill, a state-of-the-art solid waste management facility.

WM:

Through a life-use lease with Monroe County, WM assumed the operation of the Mill Seat Landfill on January 15, 2002. WM is the largest provider of comprehensive waste and environmental services in North America, as well as North America's largest municipal waste recycler and a leader in waste-based energy technologies. We serve millions of customers with environmentally sound management of solid wastes and transformation of waste into usable resources. Across North America, we continue to implement emissions reduction plans to reduce our overall greenhouse gas emissions 42% over the next few years. In years ahead, we plan to do so by increasing the beneficial use of landfill gas, make continued investments in landfill gas collection and measurement systems, continued deployment and testing of technology to gather landfill emissions data, continue to convert our fleet to alternative fuel vehicles and increase allocation of renewable natural gas to our compressed natural gas fleet. At WM, we are also committed to increasing the recovery of materials by investing billions of dollars in recycling infrastructure, automation technology, other new technologies, and expansion of recycling and organics services.

Landfill Facts (approx):

Began: 1991
Total Property: 747 acres
Landfill Footprint: 216.9 acres
Construction Cost: \$60 million
Design Capacity:

- 1,945 tons per day (MSW)
- 835,900 tons per year

Site Life: 2057



Hours of Operation

Phone: 585.494.3000 Website: millseatlandfill.wm.com

Hours of delivery and operation are based on the type of materials delivered:

Municipal Solid Waste (MSW), Construction and Demolition Material (C&D), Wood Waste, Contaminated Soils and Certain Special Waste:

Monday through Friday
7:00 A.M. until 4:00 P.M.
Saturday
7:00A.M. until 10:00 A.M.

Note: Transfer Trailers carrying any of the material listed above need to be at the landfill before 3:30 P.M. Monday through Friday.

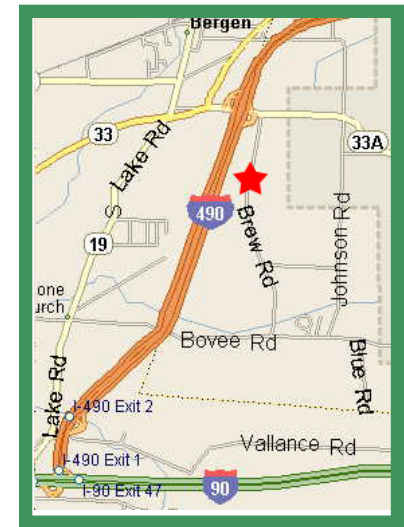
Treatment Plant Sludges:

Monday Through Friday
7:00 A.M. until 2:00 P.M.

Asbestos and Special Waste Trench Loads:

Monday Through Friday
8:00 A.M. until 2:00 P.M.

The facility is currently closed Sundays, New Year's Day, Memorial Day, Fourth of July, Labor Day, Thanksgiving Day and Christmas Day. Hours of operation are subject to change without prior notification.



Directions to Mill Seat Landfill

From Western New York

From the New York State Thruway (I-90 E). To exit 47 (I-490 E). To exit 2 (RT-33A Bergen/Batavia). Turn right onto RT 33A. Turn right onto Brew Rd. Mill Seat is at the end of Brew Rd.

From Eastern New York

From the New York State Thruway (I-90 W). To exit 47 (I-490 E). To exit 2 (RT-33 A Bergen/Batavia). Turn right onto RT 33 A. Turn right onto Brew Rd. Mill Seat is at the end of Brew Rd.

From Rochester, New York

From I-490 W To Exit 2 (RT - 33 A Bergen), merge left onto Rt 33A Turn right onto Brew Rd. Mill Seat is at the end of Brew Rd.

Always Working For A Sustainable Tomorrow®

WM is reinventing what's possible to enable a more sustainable world. Leveraging our infrastructure, innovation, and expertise, we're centering our sustainability vision for the future around three core ambitions: material is repurposed, energy is renewable, and communities are thriving.

sustainability.wm.com

Mill Seat Open House

WM hosts an annual informational and educational open house for its neighbors. Highlights of the event are landfill tours by bus, kid-friendly games, WM trucks and equipment on display, and prizes. The event provides insight on how Mill Seat Landfill operates from construction and design to renewable energy production. At information booths, attendees have the opportunity to talk with all of the entities that work in conjunction with the landfill including engineers, contractors, consultants, regulators, vendors and elected officials. The event is typically held the last Thursday in July, on even numbered years, with an attendance over 1,000 neighbors each year. Community partners, such as the Churchville Lions Club, Churchville Fire Department, local Scout groups, and many others help make this annual event a community wide success.



Bagster® Bag BUY.FILL.GONE.®

Clear clutter and debris with the convenience of a Bagster® bag. The Bagster® bag folds up neatly enough to fit on store shelves, yet holds up to 3,300 lbs. of waste and debris. Best of all, you could have one at your home or site today.

thebagster.com

Connect with and follow WM on social media!

-  @official_WM
-  @WasteManagement
-  @WM
-  @WasteManagement



Community Benefits

At WM we firmly believe we have a responsibility to invest in communities in which we do business. As the operator of the Mill Seat Landfill (WM), we support the local community through the purchase of an average of \$5 million of goods and services annually. In addition, WM employs 25 permanent personnel and up to 50 part-time construction personnel. In accordance with the host community agreement, WM provides the following financial and in-kind benefits.

Benefactor	Benefit (1993 - Q1 2024)
Town of Riga (revenue sharing)	Over \$45 million
Town of Riga (collection)	Over \$6.8 million
Town of Bergen (revenue sharing-established in 2012)	Over \$700k
Bergen Fire Department	Over \$213k
Byron-Bergen Schools	Over \$2.3 million
Water Main Improvements	\$12.1 million
Property Protection	\$207,150

Ensuring Environmental Performance

Safeguarding the environment means conducting our operations responsibly so that we maintain compliance with all regulations; avoid spills and adverse impacts on land, air, groundwater and surface water; conserve water and energy; and reduce our greenhouse gas emissions.

Our goal for environmental compliance is simple: zero deviations from regulatory standards and sound environmental practice. The goal of our environmental management system is to correct conditions through good planning, engineering, and operational controls that could lead to a violation before the violation happens. We continue to take every departure from regulations, no matter how small, very seriously. A few ways in which we succeed in accomplishing this is through the following programs.

Citizen Advisory Board (CAB)

- a formal liaison for the community made up of 13 members as follows:
- 4 members designated by the Town of Riga
- 1 member designated by the Town of Bergen
- 1 member designated by the Village of Bergen
- 1 Trustee designated as a member by the Village of Churchville
- 6 members designated by the Monroe County Executive (at least 1 Town of Riga resident and 1 Village of Churchville resident)

NYS Dept. of Environmental Conservation monitor (annual cost approx \$120,000) located on site daily to oversee daily landfill operations.

Environmental Monitoring Program (annual cost approx \$400,000)

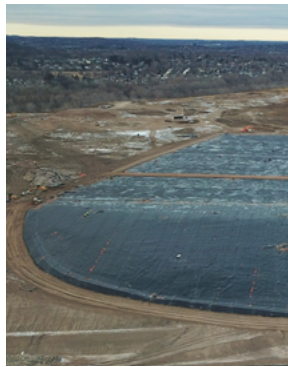
- Groundwater - quarterly sampling & analysis - located at varying depths, which sample area water for contaminants
- Surface water - quarterly sampling & analysis - Hotel Creek and wetlands
- Leachate - quarterly sampling & analysis - rain water, which has drained through the waste mass, is collected and disposed at Wastewater Treatment Facilities
- Air - ambient air monitoring conducted quarterly
- Surface Emissions Monitoring conducted quarterly

Landfill Gas Management. Landfill gas is a by-product of the waste decomposition process. See page 10.

Geomembrane Temporary Cover. A temporary cover is placed over the area to minimize and reduce greenhouse gas emissions and control odors. See photo at right.

Double Composite Liner. The landfill's multi-layer liner system is made up of several layers of plastic and impermeable clay approximately 60" thick. See diagram at right.

Final Cover System. An impermeable "cover" is placed over waste to prevent air and water from getting into the landfill mass.



Additional regulatory requirements to ensure environmental protection:

Federal/State

- NYSDEC Solid Waste Permit #: 8-2648-00014/00001
- NYSDEC Solid Waste Facility #: 28LS0025
- CBS Permit

Engineering Report • Operation & Maintenance Manual • Mill Seat Solid Waste Landfill Engineering Plans • Construction Quality Assurance/Quality Control Manual Contingency Plan • Environmental Monitoring Plan & Site Analytical Plan • Leachate Management Plan • Closure-Post Closure Plan • Freshwater Wetlands Permit • Final Environmental Impact Statement • Habitat Management Plan • Spill Prevention Control & Countermeasures Plan • State Pollution Discharge

Elimination System Permit - Storm Water

- Title V Air Permit #8-2648-00014/00011
- Petroleum Bulk Storage Certificate 8-600114

County

Monroe County Department of Environmental Services Sewer Use Permit

- Monroe County Sewer Use IWC-96

Town/Village

Host Community Agreement
Citizen Advisory Board (CAB)



Monroe County's continual environmental protection efforts have now expanded to include the **ecopark**. The **ecopark** is an innovative partnership between Monroe County and WM that provides county residents with a "one-stop drop-off" recycling facility where residents can bring their difficult-to-manage items including: electronics, appliances, compost, paper and cardboard, printer cartridges, propane tanks, bulky plastic items, cooking oil/grease, fluorescent lights, sharps and syringes, sneakers, clothing and scrap metal. Special collections are also available for pharmaceutical and medication diversion as well as household hazardous wastes.

"The development of [the] Ecopark is a testament to our collective commitment to the residents of Monroe County. This facility will help redirect materials out of landfills and back in to the supply chain for re-use. We will be extracting materials that can be used in ways that create more value than if they were simply thrown away." –Jeff Richardson, Senior District Manager at WM of New York, LLC

The **ecopark** has two categories of drop-off services:

- **Regular Collections** - Open Wednesday (1:00pm- 6:30pm) and Saturday (7:30am- 1:00pm) to accept items like: ewaste, scrap metal, clothing, curbside recyclables, bulky plastics, and more!
- **Household Hazardous Waste (HHW)** - HHW is collected during Ecopark hours **BY APPOINTMENT ONLY** (visit Ecopark website for list of HHW items)

To learn more about the **ecopark** and find full details about collections, please visit monroecounty.gov/ecopark call 585-753-7600 and select option #3, or visit us at 10 Avion Dr, Rochester, NY 14624.



A public/private partnership



Wildlife Habitat Council

The Wildlife Habitat Council (WHC) is a nonprofit, non-lobbying 501(c)(3) group of corporations, conservation organizations, and individuals dedicated to restoring and enhancing wildlife habitat. WM is an active corporate member of WHC and currently provides almost 26,000 acres of protected land for wetlands and wildlife habitat.

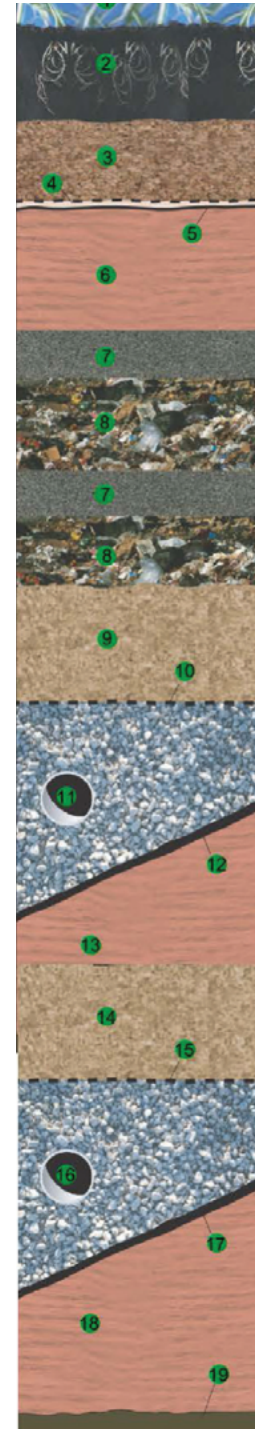
Mill Seat's wildlife habitat management program has been WHC certified since 2002. In recent years, Mill Seat's program has earned Gold Certification due to employee's and other individual's great efforts to promote environmental conservation and enhance wildlife habitat. WM Mill Seat Landfill has a dedicated area known as the Frances Willard Conservation Area near Bovee/Johnson Roads which consists of over 100 acres of protected wetlands and woodlands dedicated to enhancing wildlife and environmental conservation. WM is partnered with the RIT Environmental Science Department to conduct environmental monitoring and research.



Mill Seat's WHC Mission

Sustainable Environmental Stewardship through wildlife habitat enhancement, employee participation, and public outreach that coincide with New York's Wildlife Action Plan.

We welcome and encourage community volunteers to assist with citizen science monitoring, annual cleanups, tree planting & seeding. Please contact Mill Seat Landfill if you are interested.



Anatomy of a Landfill

Protective Cover

1. Cover Vegetation
2. Top Soil
3. Protective Cover Soil

Composite Cap System

4. Drainage Layer
5. Geomembrane
6. Compacted Clay

Working Landfill

7. Daily Cover
8. Waste

Leachate Collection System

9. Primary Leachate Collection Layer
10. Filter Geotextile
11. Primary Leachate Collection Pipe System
12. Geomembrane
13. Compacted Clay
14. Structural Fill
15. Filter Geotextile
16. Secondary Leachate Collection Pipe System

Composite Liner System

17. Geomembrane
18. Compacted Clay
19. Prepared Subgrade

Get Home Safe Every Day

At WM, we nurture a culture where health and safety are the foundation of everything we do. Our safety vision states, that we will value every voice, protect our communities, and Get Home Safe, Every Day.

Site Specific Safety Rules and Regulatory Requirements

- Trucks must not arrive on Brew Road prior to 6:30 am
- No trucks will be scaled prior to landfill opening at 7:00 am
- No parking on Brew road
- All vehicles must stop prior to pulling onto scales
- All loads must be tarped, secured or tied down prior to entry
- No un-tarping and turn buckles undone at the scales or prior to scales
- Un-tarping in designated areas only
- Do not use CB radios while on scales (interfere with our computer system)
- Landfill operators and scalehouse monitor CB channel 13
- Helpers/passengers MUST stay in vehicle at all times. Only the driver is permitted outside the vehicle
- In case of spills please notify scalehouse immediately - (585) 512-2465
- Site speed limit is 10 MPH
- Yield right of way to landfill equipment and vehicles
- Hard hats & reflective/high visibility vests are required to be worn while outside vehicle
- No scavenging
- No one under age of 16 is permitted outside of vehicles
- No smoking at the working face or while in contact with trash (i.e. un-tarping)
- Sweeping/cleaning out of trucks and trailers must be done in designated areas only
- All vehicles entering the facility must be of legal weight
- All customers hauling special waste must have a valid Part 364 Permit
- All customers and transporters must comply with Working Face Policy and Procedures (furnished upon request)
- All customers entering and exiting the facility must do so in accordance with the routing requirements outlined in the facilities policies and procedures (furnished upon request)
- All MSW haulers must utilize approved haul routes
- Please direct any questions to (585) 494-3000



Failure to abide by all regulations, rules, requirements, signage and postings will result in fines, penalties, or other disciplinary action up to and including discontinuing use of landfill.

Renewable Energy

Biodegrading waste in a landfill naturally emits methane, a greenhouse gas. At most landfills in the United States, the methane is simply burned off in flares. By capturing this methane gas and using it instead to produce power at renewable energy facilities, we reduce methane emissions and the environmental impact of their release into the air. We also create an alternative power source, offsetting the impacts of power that otherwise occur by burning fossil fuels.



Mill Seat Renewable Energy Facility:

- Utilizes 3,500 cfm of gas
- 6.4 mw of electricity is produced
- Enough energy to power 6,000 homes
- Over 200 gas extraction wells are located throughout the site



Sustainability Goals

WM plays a vital role in keeping our communities and environment clean and safe by providing environmental solutions across North America for generations. We recognize that the issues facing the world today require bolder action and that yesterday's solutions won't meet the demands of our current social and environmental challenges. Our sustainability strategy is centered on three core ambitions: Material is repurposed, Energy is Renewable, and Communities are thriving. This means we're reimagining a circular economy by investing in and operating innovative recycling and waste solutions that fuel the continuous reuse of materials. It also means we're empowering people to live sustainably, both our team members and community while strengthening the resiliency of the diverse places where we live and work.

Material is **REPURPOSED**

We're reimagining a circular economy.



Energy is **RENEWABLE**

We're innovating for climate progress.



Communities are **THRIVING**

We're empowering people to live sustainably.



Waste Materials Prohibited

Municipal Solid Waste (MSW), special waste and commercial/industrial waste **CANNOT** be accepted from the following New York State counties (Kings, Queens, New York, Richmond, Bronx) or outside of New York State.

The following materials are prohibited from disposal:

- Waste identified in 6NYCRR Part 360-1.5(a) and (b)
- Hazardous Waste
- Lead Acid Batteries (automobile batteries)
- Rechargeable batteries - all
- Untreated Regulated Medical Waste
- Liquids
- Radioactive Waste
- Liquid Petroleum Products
- Petroleum Sludge
- PCB Contaminated Waste greater than 50 ppm
- Any steel or plastic drum or tank larger than 10-gallon capacity that has not had the ends removed or has not been shredded
- Any empty drum or container which has held hazardous waste and is not empty according to 40 CFR 261.7(a)(3)
- Containers of 5 gallon capacity or larger shall not be disposed at this facility unless the ends have been cut off and the containers have been crushed. This prohibition does not apply to 30-gallon and 55-gallon drums that contain waste toner
- Any industrial or commercial liquids, sludges, or slurries, which are less than 20 percent solids
- Uncontaminated leaves, grass clippings, brush, branches, stumps and tree sections with the exception of debris that has been contaminated by excessive use of pesticides
- Any waste(s) regulated by 6 NYCRR Part 364 unless the waste hauler possesses a valid Part 364 permit which specifies this landfill as a disposal site for such waste(s) and disposal of such waste has been approved by WM and the New York State Department of Environmental Conservation in writing
- Yard waste
- Tires
- Waste oil
- Automobiles
- White goods (refrigerators, freezers, air conditioners, and dehumidifiers)
- Unapproved commercial or industrial waste (Special waste)
- Approved commercial or industrial waste not handled by a waste hauler who possesses a NYSDEC Part 364 Waste Transporter Permit
- Fluorescent bulbs containing mercury
- Electronic equipment (computers, television)

Waste Materials Accepted

All non-hazardous waste material accepted at Mill Seat Landfill are managed in accordance with NYSDEC Part 360 regulations and any special conditions set forth in the Operating Permit issued by the NYS Department of Environmental Conservation.

Municipal Solid Waste (MSW), special waste, commercial/industrial waste, beneficial use determination (BUD) and alternate daily cover materials (ADC) can be accepted at Mill Seat Landfill from areas within the borders of New York State with the exception of Kings County, Queens County, New York County, Richmond County and Bronx County.

The following is a list of materials currently accepted for disposal or reuse at Mill Seat Landfill:

Municipal Solid Waste (MSW)

- Friable Demolition *** (24 hours notice)
- Municipal Solid Waste
- Wood Waste and Pallets
- Ashes*
- Industrial Waste*
- Asbestos*** (24 hour notice required)
- Food Products*
- Railroad Ties/Telephone Poles*
- Sandblast Materials*
- Water Treatment Sludge*
- Food Processed Waste*
- POTW Sludges***
- Scrap Wastes*
- Grinding Sludge*
- Paper Sludge*
- Industrial Processed Sludge*
- Pharmaceutical Manufacturing Materials*
- Slag Materials*
- Off Specification Products*
- Pharmaceuticals*
- Food Waste (pies, ice cream, etc.)*
- Out Dated Products*
- Toner*
- Incinerator Ash
- Car Wash Clean Out Sludge**
- Ink Sludge**
- Paint Sludge (latex paints)**
- Laundry Sludge**
- Catch Basin Grit**
- Treated Medical Waste***
- Non-hazardous Petroleum Contaminated Soils*
- Floor Dry (speedy dry to clean up spills)*
- Pond Clean-up Materials*
- Non-TSCA PCB Contaminated Soils less than 50 ppm*



Waste Materials Accepted

(Continued)

List of materials currently accepted for disposal or reuse at Mill Seat Landfill (continued):

Beneficial Use Determination (BUD)/Alternate Daily Cover (ADC)
 Construction and Demolition Materials
 Non-Hazardous Petroleum Contaminated Soil*
 Foundry Sand*
 Bottom Ash from coal-fired boilers*
 Bottom Ash/Fly Ash mixture
 Wastewater Treatment Plant Incinerator Ash*
 Auto Shredder Fluff (shredded material from inside a car)*
 Wood Chips
 Mixed Glass Cullet

Notes:

- * **A WM Special Waste Profile must be completed and the appropriate testing is required before approval or acceptance of this material.**
- ** **Any industrial or commercial liquids, sludges, or slurries, which are at least 20% solids.**
- *** **Only acceptable if generated within the borders of Monroe County.**

All haulers must have a valid NYS Part 364 Waste Transporter Permit.

WMsolutions.com is your single-source for finding the environmental solutions that best fits your needs, from locating treatment and recycling locations to submitting online profile forms for streamlined approvals, and more.



Recycling Solutions

Find solutions for reprocessing your recyclable materials and commodities.



Electronic Components

Find solutions for recycling used electronic equipment.